



PATIENT ACCOUNTING

HIGHLIGHTS INCLUDE:

Patient Registration

- Insurance card scanning and display
- Electronic face sheet for on-line verification of demographic, insurance, and appointment information
- Medical alert codes displayed on patient information inquiries
- On-line crosschecking for bad debt account status
- Insurance company, plan, and membership displayed
- Referral source identified
- On-line help
- Extensive patient/account data
- On-line insurance verification
- Patient/provider web portal

SurgeOn Patient Accounting allows you to easily customize your billing requirements. This system automatically calculates fees based on carriers, providers, and departments. In addition, feature options allow you to tailor the system to fit your unique business needs. Concise reporting delivers extensive accounts receivable and surgery center statistical data.

Trusted Experience. Innovative Solutions. Unparalleled Service.

Charge/Payment/Adjustment Entry

- Automatic pricing by software or manual override
- Grouper pricing
- Insurance payments applied via open item posting with automatic calculation of disallowance
- Invoice payments and adjustments automatically linked to provider, location, department, and group for receivables reporting
- Demographic scrub of all claims for accuracy before submitting
- Open item posting and maintenance of all transactions
- Account write-off to collection agency
- Automatic refund checks

Billing/Accounts Receivable

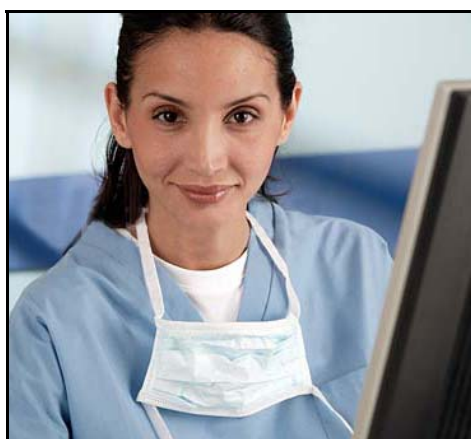
- Patient billing
- Insurance billing
- Anesthesia billing
- Electronic claims submission
- Exception and remittance reports for non-reimbursed services
- Extensive billing, patient, and claim memos
- Patient statements
- Invoices and collection letters automatically generated monthly

e-Business Collections Manager

- Improves collections efficiency
- Decreases AR days
- Single-screen collector "worksheet"
- Customized letter and form generation

Reporting Components

- AR Dashboard
- Required reports available as standard reports
- Multiple view, print, and export options
- User-defined reports using ODBC compliant tools



Call today to schedule a product demonstration!

5710 Coventry Lane ■ Fort Wayne, IN 46804
sales@experior.com ■ www.experior.com
(260) 432-2020 ■ (260) 432-4753, fax ■ (800) 595-2020

EXPERIOR
HEALTHCARE SYSTEMS